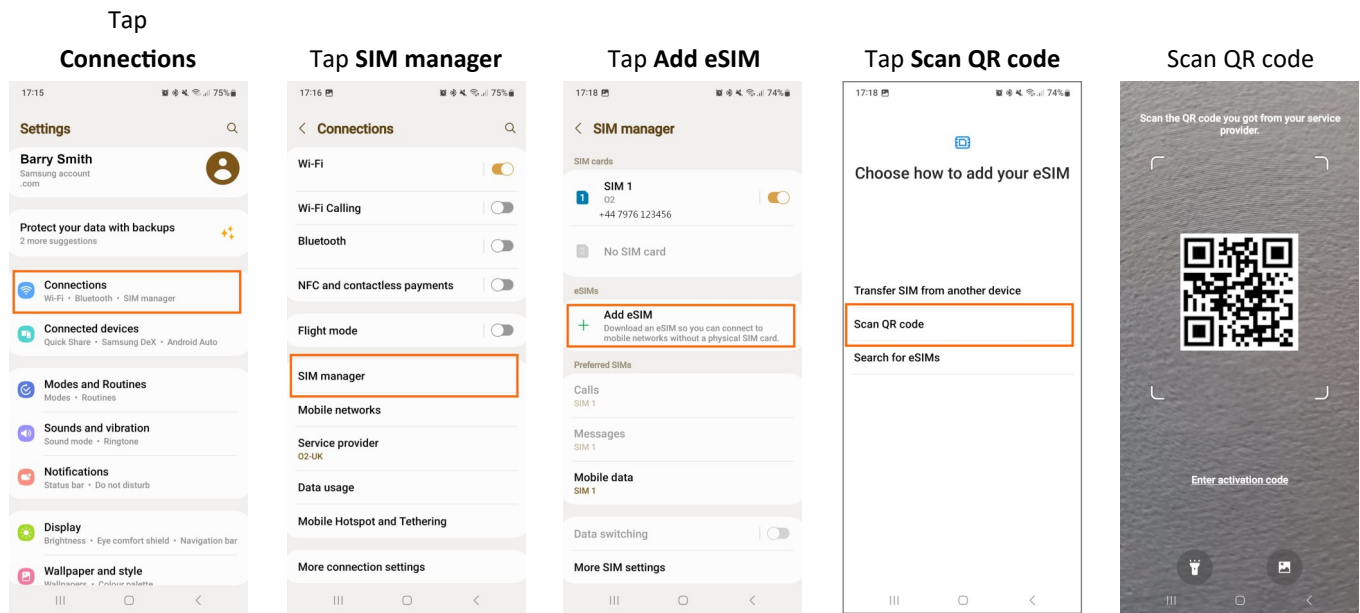


## Install eSIM on Samsung phone or tablet (Printable version)

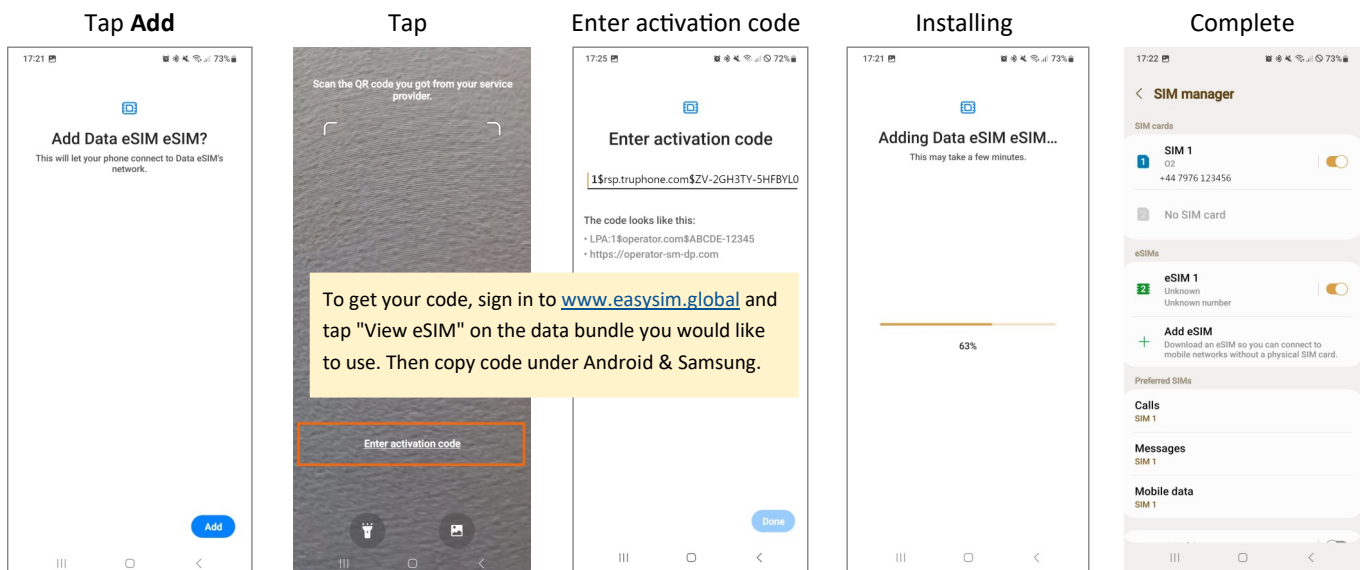
### Prestart checklist

- ✓ A strong internet connection – Ideally, you will need to be on Wi-fi or have good 4G signal.
- ✓ An eSIM compatible device – If you are unsure, see list of compatible devices [here](#)
- ✓ Your device must not be locked to a single network.

## PART 1: Install your eSIM using QR code

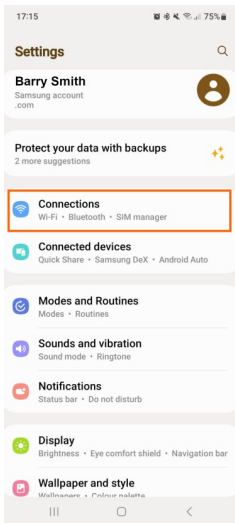


← Unable to scan QR code?  
Follow these extra steps →

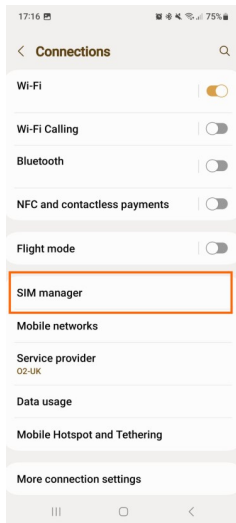


## PART 2: Activate your data bundle

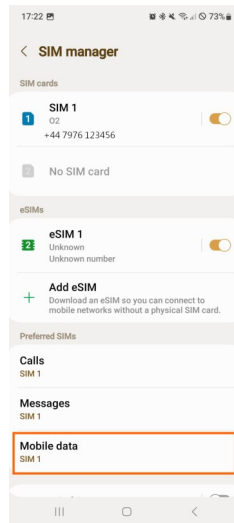
### Tap Connections



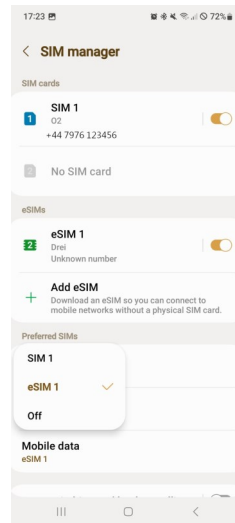
### Tap SIM manager



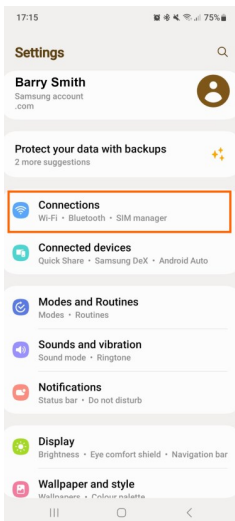
### Tap Mobile data



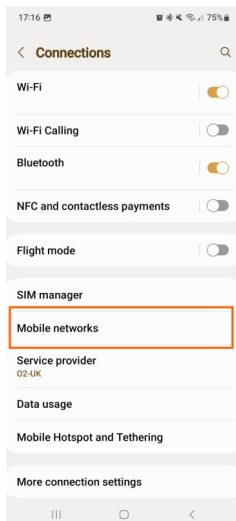
### Tap eSIM 1



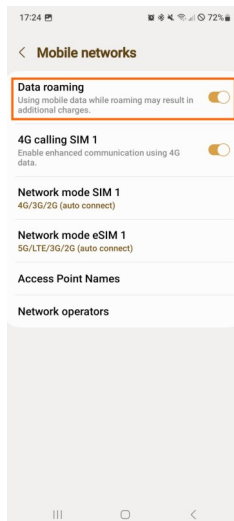
### Tap Connections



### Tap Mobile networks



### Enable Data roaming



### Tips

- Notice the two signal strengths at the top of your screen!
- The signal strength shown on the right is the one being used for "Mobile Data".
- To save battery, turn off your easySim if you're not using it.
- We suggest you name your eSIM "easy" so you can easily recognise it. To do this, click the edit pencil in top right corner of screen.