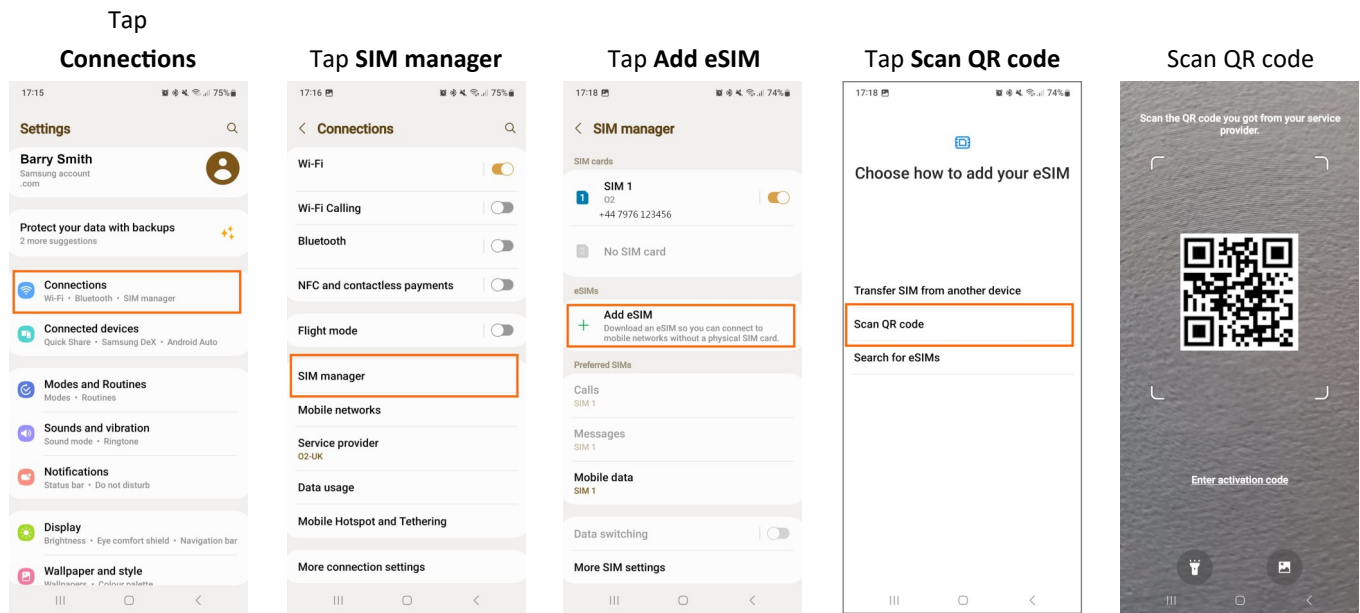


Install eSIM on Samsung phone or tablet (Printable version)

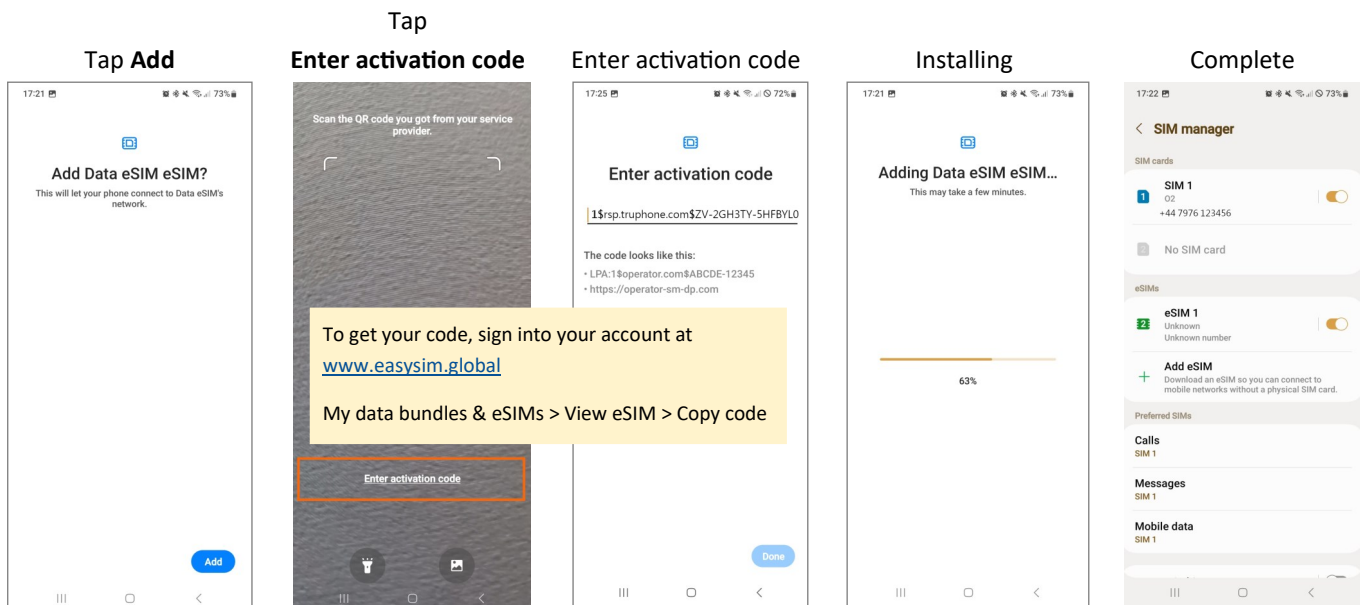
Prestart checklist

- ✓ A strong internet connection – Ideally, you will need to be on Wi-fi or have good 4G signal.
- ✓ An eSIM compatible device – If you are unsure, see list of compatible devices [here](#)
- ✓ Your device must not be locked to a single network.

PART 1: Install your eSIM using QR code

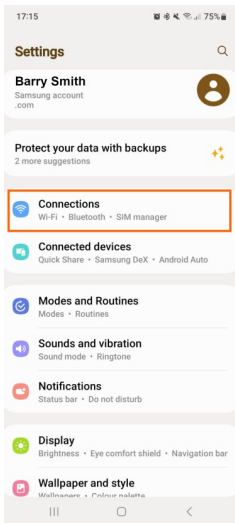


← Unable to scan QR code?
Follow these extra steps →

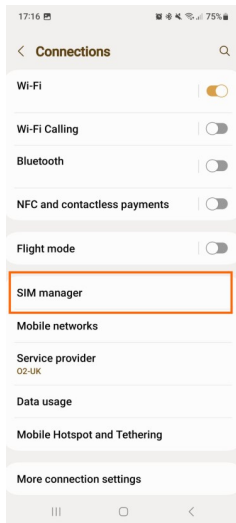


PART 2: Activate your data bundle

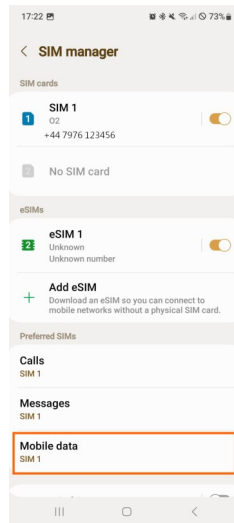
Tap Connections



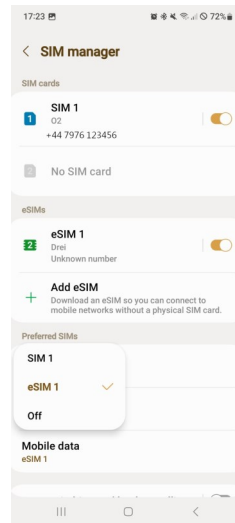
Tap SIM manager



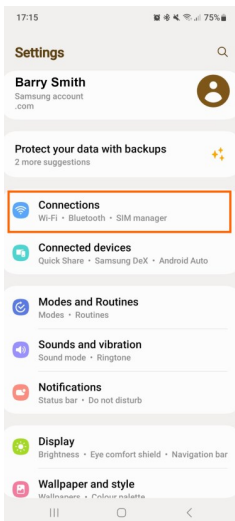
Tap Mobile data



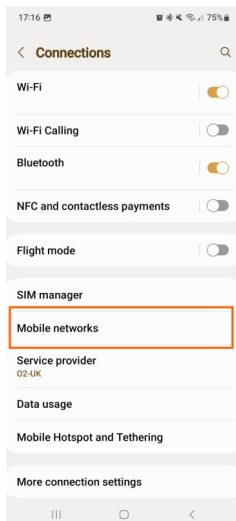
Tap eSIM 1



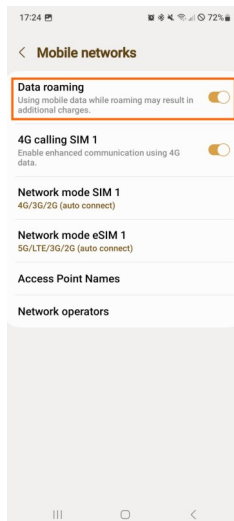
Tap Connections



Tap Mobile networks



Enable Data roaming



Tips

- Notice the two signal strengths at the top of your screen!
- The signal strength shown on the right is the one being used for "Mobile Data".
- To save battery, turn off your easySim if you're not using it.
- We suggest you name your eSIM "easy" so you can easily recognise it. To do this, click the edit pencil in top right corner of screen.